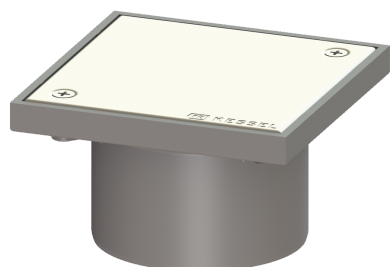


Cleanout Sys 100, ABS, Cover 304 SST, screw, K3



Article information

Item no.: 27191G
 GTIN: 4026092054932
 Price group: 10

Description

The cleanout, made of polymer with grating and frame made of stainless steel, serves as an upper section for direct connection on pipes and is equipped with a closed, screwed cover plate.

Variant	
System:	100
Dimensions	
Net weight:	0,45 kg
Gross weight:	0,45 kg
Height:	93 mm
Packaging dimension:	length
Packaging dimension:	width
Packaging dimension:	height
Coverage features	
Type of cover:	closed cover plate
Cover material:	Stainless steel 14301
Colour of cover:	silver
Height of cover:	17 mm
Surface:	Polished SST
Frame material:	ABS
Locking:	screwed
Load class:	K 3 (EN 1253-1)
Rim width:	150 mm
Rim length:	150 mm
Shape of upper section:	square
Upper section material:	ABS