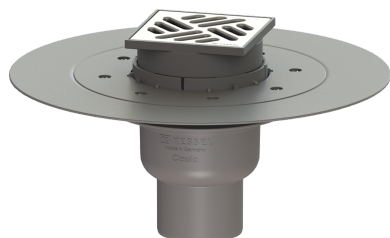


Classic bathroom drain glued fl. DN 70, vertical, Slotted grating, K 3



Article information

Item no.: 40270.90
 GTIN: 4026092029558
 Price group: 10

Advantages

- Odour trap height: 50 mm
- Lip seal fixed on the drain body
- System 100 - modular design

Description

The Classic bathroom drain is suitable for indoor floor drainage. The drain made of ABS is equipped with a telescopic, height-adjustable upper section made of polymer, a removable odour trap as well as a secure, reliably installed seal. Including glued flange and mating flange for clamping PVC sheeting (vapour barriers) or for alternative waterproofing layers (additional honeycomb fabric required).

Variant

| | |
|--|--|
| Waterproofing layer on the upper section: | Adhesive flange (suitable for moisture barriers) |
| Waterproofing layer on the drain body: | Adhesive flange (suitable for moisture barriers) |
| Water exposure class in accordance to DIN 18534-1 (up to and including): | W3-I |
| Sealing water height: | 50 mm |
| Discharge rate (l/s) with 20 mm threshold: | 0,8 |

General characteristics

| | |
|----------------------|-----------|
| Standard: | EN 1253-1 |
| Nominal size (DN): | 70 |
| Outer diameter (OD): | 75 mm |
| Odour trap: | included |

Dimensions

| | |
|-------------------------------|-------------------------------------|
| Vertical adjustment: | 20 - 60 mm |
| Net weight: | 0,55 kg |
| Gross weight: | 0,92 kg |
| Cutout dimension, width: | 350 mm |
| Cutout dimension, length: | 350 mm |
| Type of height adjustability: | vertically adjustable upper section |
| Length: | 332 mm |
| Width: | 332 mm |
| Packaging dimension: | length |

| | |
|-------------------------|-----------------------|
| Packaging dimension: | width |
| Packaging dimension: | height |
| Tank/drain body | |
| Number of outlets: | 1 |
| Material of drain body: | ABS |
| Socket version: | vertical |
| Coverage features | |
| Type of cover: | Slotted cover |
| Cover material: | Stainless steel 14301 |
| Colour of cover: | silver |
| Width of cover: | 100 mm |
| Length of cover: | 100 mm |
| Frame material: | ABS |
| Locking: | placed |
| Load class: | K 3 (EN 1253-1) |
| Rim width: | 107 mm |
| Rim length: | 107 mm |
| Shape of upper section: | square |
| Upper section material: | ABS |