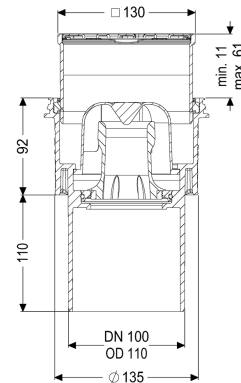


## Practicus floor/roof drain DN 100, vertical, Slotted grating



### Article information

Item no.: 45210.20  
GTIN: 4026092055649  
Price group: 10

### Advantages

- Hygiene: hygienic, absolutely corrosion-free and durable material
- Fire protection: combinable with the Fire-Kit for fire and smoke protection
- Sound insulation: outstanding sound insulation effect confirmed by the Fraunhofer Institute

### Description

The Practicus floor drain is used for point drainage and is equipped with a connection flange as well as a removable odour trap, a lip seal and a temporary protective cover. Including telescopic height-adjustable upper section made of ABS. The drain meets particular sound insulation requirements in accordance with the measurements of the Fraunhofer Institute in Stuttgart. The outlet socket is suitable for connection to SML cast iron pipes. With connection option for equipotential bonding.

Variant

System:	125
Waterproofing layer on the upper section:	Connection flange
Waterproofing layer on the drain body:	Connection flange
Sealing water height:	50 mm
Discharge rate (l/s) with 20 mm threshold:	2

General characteristics

Standard:	EN 1253-1
Nominal size (DN):	100
Outer diameter (OD):	110 mm
Approval:	Z-19.53-2414,Z-19.53-2414_V,Z-19.17-1719,Z-19.17-1719_V
Odour trap:	included

#### Dimensions

Vertical adjustment:	9 - 62 mm
Net weight:	1,05 kg
Gross weight:	1,05 kg
Cutout dimension, width:	180 mm
Cutout dimension, length:	180 mm
Type of height adjustability:	vertically adjustable upper section
Length:	156 mm
Width:	156 mm
Height:	210 mm
Packaging dimension:	length
Packaging dimension:	width
Packaging dimension:	height

#### Tank/drain body

Connection inlet/outlet sockets:	The outlet spigot is suitable for connection to SML pipes.
Material of drain body:	PP
Socket version:	vertical

#### Coverage features

Type of cover:	Slotted cover
Cover material:	Stainless steel 14301
Colour of cover:	silver
Width of cover:	120 mm
Length of cover:	120 mm
Locking:	unscrewed
Load class:	K 3 (EN 1253-1)
Grating design:	Kessel
Rim width:	130 mm
Rim length:	130 mm
Upper section:	vertically adjustable
Upper section material:	ABS