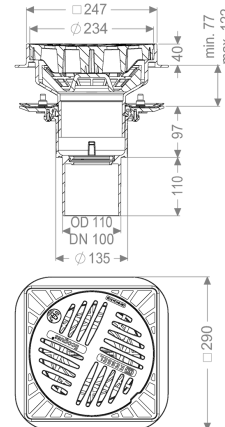


Parking deck drain, Ecoguss Pressure sealing flange, DN 100, square



Article information

Item no.: 48811.01
 GTIN: 4026092036099
 Price group: 40

Advantages

- Breakproof & load resistant
- withstand temperatures up to 400 degrees Celsius

Description

The Ecoguss parking deck drain is used for point drainage and is equipped with a sludge bucket. The recyclable composite material Ecoguss is temperature resistant and has a permanently corrosion-free surface. The outlet socket is suitable for connection to SML cast iron pipes. Separate equipotential bonding is not necessary. For products with pressure sealing flange:

The pressure sealing flange with bolts and screws made of stainless steel is used for the clamping or welding of bitumen and polymer bitumen sheets as well as for polymer and elastomer sealing sheets. Only membranes tested by the manufacturer may be used for watertight seals. The outlet socket is suitable for connection to SML cast iron pipes. With connection option for equipotential bonding. It can be exposed to flames for short periods, 100 up to 400 degrees Celsius.

| | |
|--|---|
| Variant | |
| System: | 125 |
| Contents of sludge trap: | yes |
| Waterproofing layer on the drain body: | Press sealing flange (suitable for creating watertight seals) |
| Discharge rate (l/s) with 20 mm threshold: | 4,5 |
| General characteristics | |
| Standard: | EN 1253-2 |
| Nominal size (DN): | 100 |
| Outer diameter (OD): | 110 mm |
| Dimensions | |
| Net weight: | 4,88 kg |

| | |
|---------------------------|---------------------|
| Gross weight: | 5,87 kg |
| Diameter: | 290 mm |
| Cutout dimension, width: | 300 mm |
| Cutout dimension, length: | 300 mm |
| Length: | 290 mm |
| Width: | 290 mm |
| Packaging dimension: | length |
| Packaging dimension: | width |
| Packaging dimension: | height |
| | |
| Tank/drain body | |
| Material of drain body: | Ecoguss |
| Socket version: | vertical |
| | |
| Coverage features | |
| Type of cover: | Round slotted cover |
| Cover material: | Ecoguss |
| Colour of cover: | black |
| Width of cover: | 234 mm |
| Length of cover: | 234 mm |
| Surface: | EDM |
| Frame material: | Ecoguss |
| Locking: | Lock & Lift |
| Load class: | B 125 (EN 124) |
| Rim width: | 247 mm |
| Rim length: | 247 mm |
| Shape of upper section: | square |
| Upper section material: | Ecoguss |
| Contents of sludge trap: | yes |