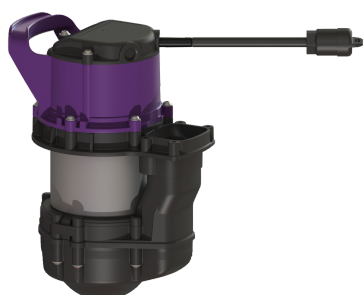


## Replacement pump GTF 600 without float switch, 10 m



### Article information

Item no.: 680964  
 GTIN: 4026092095393  
 Price group: 90

### Description

Replacement pump for wastewater containing faecal matter.

#### General characteristics

Type of wastewater: without sewage

#### Dimensions

Net weight: 6,8 kg  
 Gross weight: 6,8 kg  
 Packaging dimension: length  
 Packaging dimension: width  
 Packaging dimension: height

#### Pumping device

Pump: GTF 600  
 Connection type: Schuko (earthed contact) 2-pin  
 Operating voltage: 230 V  
 Mains frequency: 50 Hz  
 Protection class (pump): IP 68 (3m)  
 Max. temperature (permanent) of conveyed material: 40 °C  
 Max. pumping height: 8 m  
 Power P1: 0,65 kW  
 Power P2: 0,4 kW  
 Operating mode: S1  
 Type of pump connection cable: H07RN-F 3G 1.5 mm<sup>2</sup>  
 Impeller type: Multi-vane impeller  
 Type of fuse required (pump): C 16 A  
 Length of mains cable for pump: 10 m  
 Rated current: 2,9 A

#### Control

Operating voltage: 230 V  
 Connection type: Schuko (earthed contact) 2-pin