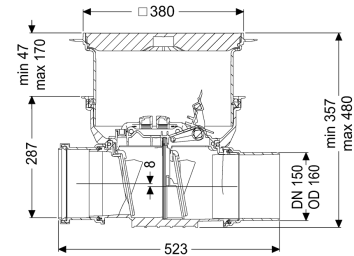


Backwater valve Staufix DN 150, Floor slab, black, Type 2 R



Article information

Item no.: 730150.10SR
 GTIN: 4026092076491
 Price group: 10

Advantages

- Optional rat protection flap for additional safety
- Flexible installation, various covers available for floor slab installation
- Alternatively available as a module set

Description

The backwater valve for wastewater without sewage is equipped with two mechanical flaps which close automatically in the event of backwater. One flap serves as an emergency closure to be closed by hand. Thanks to the modular KESSEL system, existing systems can easily be converted to the StaufixControl backwater valve.

Variant

| | |
|---|-----|
| Stainless steel flap as rat protection: | yes |
| Emergency closure: | yes |
| Mechanical backwater flaps: | 2 |

General characteristics

| | |
|-------------------------|---|
| Colour: | black |
| Standard: | EN 13564 |
| Nominal size (DN): | 150 |
| Outer diameter (OD): | 160 mm |
| Type of wastewater: | without sewage |
| Installation situation: | floor slab installation |
| Delivery state: | Installation-ready (connection parts must be connected on site) |
| Backwater protection: | Type 2 |

Dimensions

| | |
|-------------|--------|
| Net weight: | 8,5 kg |
|-------------|--------|

| | |
|--|-------------------------------------|
| Gross weight: | 11,1 kg |
| Groundwater resistant from lower edge of base section: | 3000 mm |
| Cutout dimension, width: | 750 mm |
| Cutout dimension, length: | 750 mm |
| Vertical drop between inlet and outlet: | 8 mm |
| Installation depth: | 341 - 464 mm |
| Type of height adjustability: | vertically adjustable upper section |
| Length: | 523 mm |
| Width: | 444 mm |
| Packaging dimension: | length |
| Packaging dimension: | width |
| Packaging dimension: | height |
| Coverage features | |
| Type of cover: | Cover plate |
| Cover material: | Polymer |
| Colour of cover: | black |
| Width of cover: | 366 mm |
| Length of cover: | 366 mm |
| Locking: | Lock & Lift |
| Load class: | L 15 (EN 1253-1) |
| Tightness: | surface water resistant |