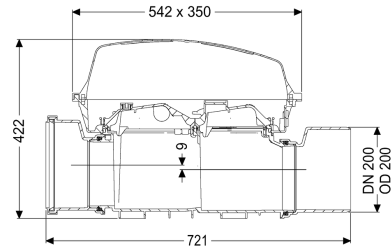
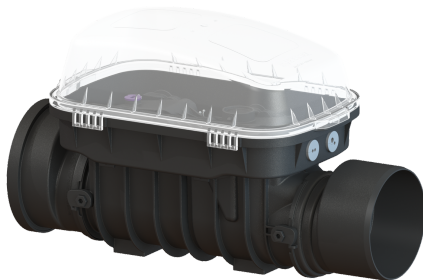


## Controfix clean out DN 200, exposed



### Article information

Item no.: 80200  
GTIN: 4026092046623  
Price group: 30

### Advantages

- Simple conversion to Staufix SWA
- Fast, simple and toolless maintenance
- Quick and toolless access for cleaning

### Description

The Premium clean out for faecal and faecal-free wastewater makes easy access to wastewater pipes possible for inspection and maintenance work. Thanks to the modular KESSEL system, existing systems can easily be converted to a Staufix SWA Premium backwater valve, Staufix FKA or Pumpfix F backwater pumping station.

#### General characteristics

Colour:	black
Nominal size (DN):	200
Outer diameter (OD):	200 mm
Note on nominal size:	Hydraulics correspond to DN 150
Type of wastewater:	for wastewater with and without sewage
Installation situation:	exposed drainage pipe
Delivery state:	installation-ready

#### Dimensions

Net weight:	6 kg
Gross weight:	11,5 kg
Vertical drop between inlet and outlet:	9 mm
Length:	486 mm
Width:	350 mm
Height:	422 mm
Packaging dimension:	length
Packaging dimension:	width
Packaging dimension:	height

Tank/drain body  
Socket version:

including spigot and socket

Coverage features

Type of cover:

Protective cover

Cover material:

Polymer

Colour of cover:

transparent

Width of cover:

350 mm

Height of cover:

165 mm

Length of cover:

542 mm

Locking:

Clip closure