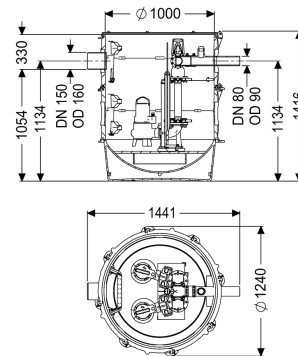


Pumping station Aquapump XL Duo, GTF 1600-S1



Article information

Item no.: 8743023
 GTIN: 4026092075777
 Price group: 60

Advantages

- Maximum safety
- Flexible installation
- Also handles large quantities of wastewater

Description

The pumping station is equipped with one or two submersible pumps and a backflow preventer. The collection tank made of permanently resistant polymer (PE) has an open pump tank with universal connection options. Quick-release closures enable the integrated components to be removed easily. The KESSEL modular system provides different engineering chamber options as accessories for the further layout. Stainless steel pump removal chains available as accessory for each installation depth - Article number:

680528 = Length 2 m 680529 = Length 3 m
 680530 = Length 4 m 680531 = Length 5 m

Variant

Note on installation depth:

Type of system:

Shut-off valve:

Passage seal for conduit pipe (DN):

Access steps:

Passage seal for ventilation pipe (DN):

Installation:

Pump control:

Backflow preventer:

Pressure pipe connection:

in combination with a chamber module

duo pump

Shut-off valve made of polymer

100

yes

100

Wet installation

Control unit

integrated

horizontal

General characteristics

| | |
|-------------------------|--|
| Colour: | black |
| Standard: | EN 12050-2 as well as EN 12050-1 (without ATEX requirements) |
| Type of wastewater: | for wastewater with and without sewage |
| Installation situation: | underground installation |
| Delivery state: | Pre-mounted for final assembly on site (pumps and sensor system must be fitted on site and control unit must be connected) |
| System type: | Duo |

Dimensions

| | |
|--|---------|
| Net weight: | 224 kg |
| Gross weight: | 248 kg |
| Groundwater resistant from lower edge of base section: | 3000 mm |
| Length: | 1370 mm |
| Width: | 1240 mm |
| Height: | 1416 mm |
| Packaging dimension: | length |
| Packaging dimension: | width |
| Packaging dimension: | height |

Tank/drain body

| | |
|---|---------|
| Pressure pipe connection (DN): | 80 |
| Pressure pipe connection (OD): | 90 mm |
| Distance from centre of outlet pipe to tank bottom: | 1134 mm |
| Distance pipe bottom inlet to tank bottom: | 1054 mm |
| Distance from centre of inlet pipe to tank bottom: | 1134 mm |
| Distance from inlet pipe invert to top of tank: | 330 mm |
| Inlet max. scoring (DN): | 150 mm |
| Inlet nominal size (OD): | 160 mm |
| Inlet nominal size (DN): | 150 mm |
| Number of inlets: | 1 |
| Clear width of tank (LW): | 1000 mm |
| Pumping volume: | 340 l |

Pumping device

| | |
|--------------------------|-------------------|
| Pump: | GTF 1600 |
| Number of pumps: | 2 |
| Weight, pump: | 27 kg |
| Connection type: | Direct connection |
| Operating voltage: | 400 V |
| Protection class: | I |
| Insulation class: | H |
| Cos phi - power factor: | 0,72 |
| Protection class (pump): | IP 68 (20m) |
| Temperature monitoring: | integrated |

| | |
|--|--------------------------------|
| Max. temperature (permanent) of conveyed material: | 40 °C |
| Max. pumping capacity: | 49 m ³ /h |
| Max. pumping height: | 9,3 m |
| Speed: | 2900 U/min |
| Power P1: | 1,6 kW |
| Power P2: | 1,2 kW |
| Operating mode: | S1 |
| Type of pump connection cable: | H07RN-F 7G 1.5 mm ² |
| Impeller type: | Multi-vane impeller |
| Length of mains cable for pump: | 10 m |
| Rated current: | 2,9 A |
| | |
| Control | |
| Control unit: | Comfort |
| Motor protection switch: | yes |
| Alarm sensor: | Level sensor |
| Level measurement instrument: | Level sensor |
| Type of level measurement: | hydrostatic |
| Protection class control unit: | IP 54 |
| Operating voltage: | 400 V |
| Connection type: | Direct connection |
| Potential-free contact: | yes |
| GSM interface: | yes |
| Log book function: | yes |
| Multi-line display: | yes |
| Battery buffering: | yes |
| Self-diagnosis system (SDS): | yes |