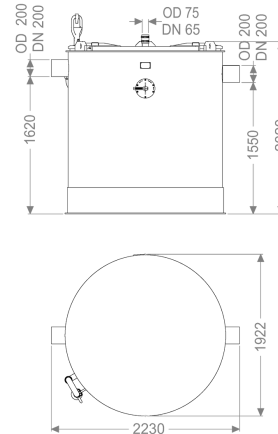


EasyClean round grease separator free, NS 15, Direct



Article information

Item no.: 93015.05/D

GTIN:

Price group: 60

Advantages

- Odour-reduced disposal with the tank closed
- Low-maintenance operation

Description

The separator for greasy wastewater is suitable for free-standing set-up in frost-protected rooms and is manufactured without the need for metallic internal structural components. The collection tank made of permanently resistant polymer (PE) is equipped with an integrated sludge trap and has sloped sides in the base to promote fast and efficient disposal. Two odour-tight covers with quick-release closures make easy access possible for cleaning and maintenance work. A direct disposal pipe socket is available for reduced-odour manual disposal. After disposal, a maximum of 3 litres residual sludge volume is left in the tank. 20 year polyethylene warranty.

Variant

Shut-off valve:	yes
Disposal variant:	Direct
Shredder-Mix-System:	no
Inspection window:	no
Nominal size (NS):	15
SonicControl:	no
Disposal system:	Disposal connection
Refill inlet in accordance with DIN 1988:	no
Type of disposal:	manual
Load-bearing capacity (DIN 19901):	F3

General characteristics

Scope of delivery:	Storz-B coupling R 2 1/2" for disposal vehicle connection
--------------------	---

Dimensions

Net weight:	350 kg
Gross weight:	350 kg
Set-up area, length:	2230 mm
Set-up area, width:	1922 mm
Set-up area, height:	2020 mm
Required access area, length:	2230 mm
Required access area, width:	1880 mm
Required access area, height:	2020 mm

Tank/drain body

Nominal pressure (PN):	10
Pressure pipe connection (DN):	65
Pressure pipe connection (OD):	75 mm
Distance pipe bottom outlet to tank bottom:	1550 mm
Distance pipe bottom inlet to tank bottom:	1620 mm
Outlet nominal size (OD):	200 mm
Outlet nominal size (DN):	200 mm
Inlet nominal size (OD):	160 mm
Inlet nominal size (DN):	150 mm
Connection inlet/outlet sockets:	PE-HD pipes in accordance with DIN 19537, HT pipes in accordance with DIN 19560, PP or AS

Coverage features

Type of cover:	Cover
Cover material:	Polymer
Colour of cover:	black
Locking:	Quick-release closure
Tightness:	odour-tight

Wastewater contents

Separator contents:	2300 l
Total volume:	3800 l
Contents of sludge trap:	1500 l
Storage quantity of grease:	600 l

Control

Control unit:	no
---------------	----